



Weweler-Colaert

RENAULT TRUCKS **D CAB 2M** REINFORCEMENT KITS

	FRONT SUSPENSION Weweler kit	REAR SUSPENSION Weweler kit
3.5t	FK046T157ZB	FK046T210ZB
3.5t HD	FK046T157ZB	FK046T212ZB
5.6t	FK046T157ZB	FK046T212ZB
6.5t	FK046T157ZB	FK046T212ZB

Available June 2015 !

"Overloaded suspensions of recreational-and LCV have a negative influence on comfort, grip and roadholding. Weweler-Colaert develops reinforcement kits for all kind of commercial vehicles and trucks in order to improve the original suspension."



RENAULT TRUCKS D CAB 2M

Renault Trucks has extended its range of vehicles for urban application in 2013 with the launch of a new model: the Renault Trucks D Cab 2m. The new urban vehicle, equipped with Euro 6 engines, is available from 3.5 to 7.5 tonnes and has been developed in cooperation with Nissan.

WEWELER-COLAERT NV – BELGIUM – info@weweler.eu

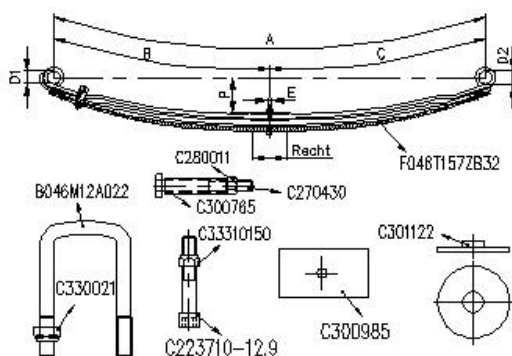




SERIE : D <7,5T Euro 6 2014

voor-avant-front-Vorne

VEER RESSORT SPRING FEDER	BR LRG WID BR	BLADEN LAMES LEAVES BLATT.	B	C	D1	D2	PH FL FA SP	PAK EP TH PAK	DETAIL	MOD	OPMERKINGEN REMARQUES REMARKS BEMERKUNGEN
F046T155AA75	70	2	750	750	S20	S20	105	43	1/18+1/19	F01.13	



Kit: FK046T157ZB

Composition:

Partsnumber:

Number:

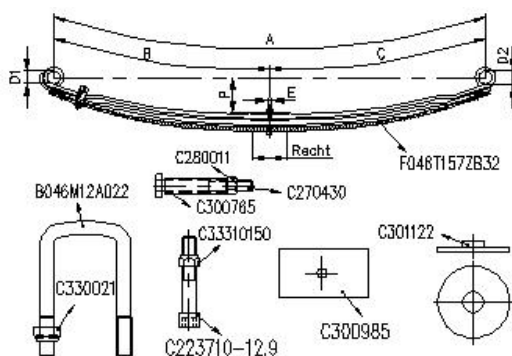
B046M12A022	4
C301122	4
F046T157ZB32	2
C33310150	2
C300985	2
C300765	2
C280011	2
C270430	2
C223710-12.9	2
C330021	8



SERIE : D <7,5T Euro 6 2014

voor-avant-front-Vorne

VEER RESSORT SPRING FEDER	BR LRG WID BR	BLADEN LAMES LEAVES BLATT.	B	C	D1	D2	PH FL FA SP	PAK EP TH PAK	DETAIL	MOD	OPMERKINGEN REMARQUES REMARKS BEMERKUNGEN
F046T155ZA75	70	2	750	750	S20	S20	101	43	1/18+1/19	F01.13	



Kit: FK046T157ZB

Composition:

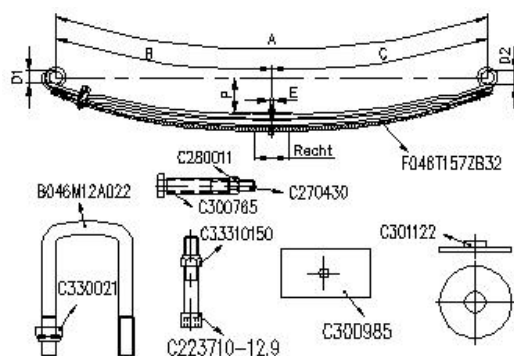
Partsnumber:

Number:

C300985	2
C330021	8
C223710-12.9	2
C270430	2
C300785	2
C33310150	2
F046T157ZB32	2
B046M12A022	4
C301122	4
C280011	2

**SERIE : D <7,5T Euro 6 2014****voor-avant-front-Vorne**

VEER RESSORT SPRING FEDER	BR LRG WID BR	BLADEN LAMES LEAVES BLATT.	B	C	D1	D2	PH FL FA SP	PAK EP TH PAK	DETAIL	MOD	OPMERKINGEN REMARKS BEMERKUNGEN
F046T157AA75	70	2	750	750	S20	S20	121	43	1/18+1/19	F01.13	



Kit: FK046T157ZB

Composition:

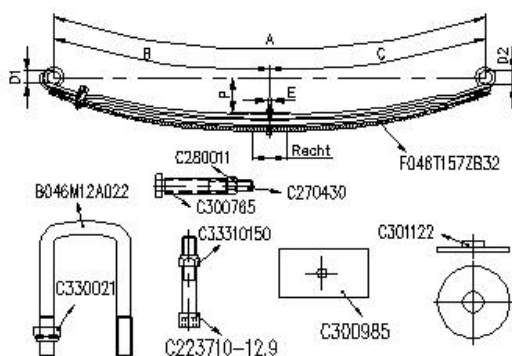
Partsnumber:

Number:

C270430	2
C280011	2
C300765	2
C300985	2
C33310150	2
F046T157ZB32	2
B046M12A022	4
C301122	4
C330021	8
C223710-12.9	2

**SERIE : D <7,5T Euro 6 2014****voor-avant-front-Vorne**

VEER RESSORT SPRING FEDER	BR LRG WID BR	BLADEN LAMES LEAVES BLATT.	B	C	D1	D2	PH FL FA SP	PAK EP TH PAK	DETAIL	MOD	OPMERKINGEN REMARQUES REMARKS BEMERKUNGEN
F046T157ZA75	70	2	750	750	S20	S20	115	43	1/18+1/19	F01.13	



Kit: FK046T157ZB

Composition:

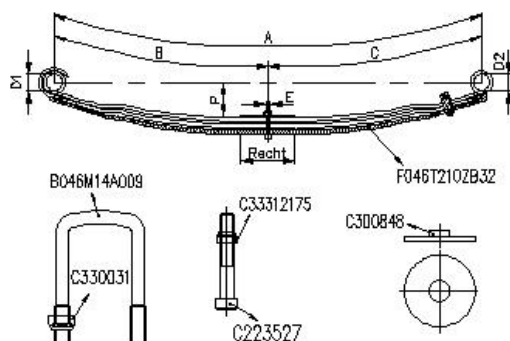
Partsnumber:

Number:

C300985	2
C301122	4
B046M12A022	4
C33310150	2
C280011	2
C270430	2
C223710-12.9	2
C330021	8
C300765	2
F046T157ZB32	2


SERIE : D <7,5T Euro 6 2014
achter-arrière-rear-Hinten

VEER RESSORT SPRING FEDER	BR LRG WID BR	BLADEN LAMES LEAVES BLATT.	B	C	D1	D2	PH FL FA SP	PAK EP TH PAK	DETAIL	MOD	OPMERKINGEN REMARQUES REMARKS BEMERKUNGEN
F046T210ZA75	70	2	650	650	S20	S20	100	38	1/16+1/18	F01.13	



Kit: FK046T210ZB

Composition:

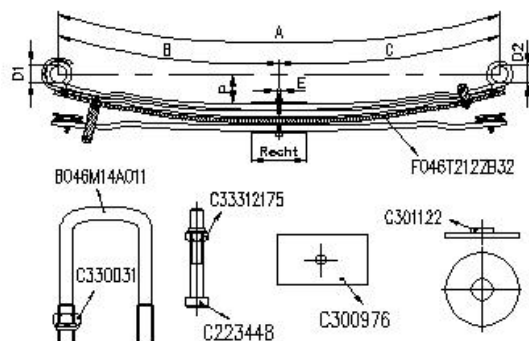
Partsnumber:

Number:

C223527	2
C33312175	2
F046T210ZB32	2
B046M14A009	4
C300848	4
C330031	8

**SERIE : D <7,5T Euro 6 2014****achter-arrière-rear-Hinten**

VEER RESSORT SPRING FEDER	BR LRG WID BR	BLADEN LAMES LEAVES BLATT.	B	C	D1	D2	PH FL FA SP	PAK EP TH PAK	DETAIL	MOD	OPMERKINGEN REMARQUES REMARKS BEMERKUNGEN
F046T212ZA75	70	3	650	650	S20	S20	84	68	1/17+1/19+1/21	F01B	



Kit: FK046T212ZB

Composition:

Partsnumber:

Number:

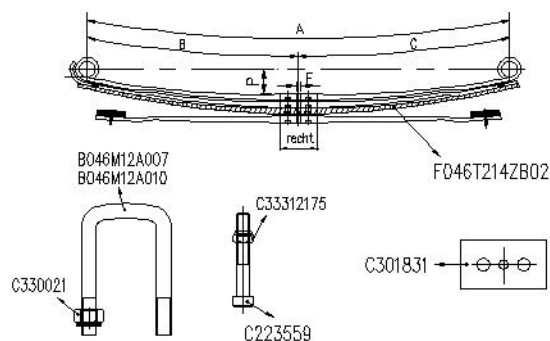
B046M14A011	4
C223448	2
C300976	2
F046T212ZB32	2
C301122	4
C330031	8
C33312175	2



SERIE : MAXITY >2013 (NT400)

achter-arrière-rear-Hinten

VEER RESSORT SPRING FEDER	BR LRG WID BR	BLADEN LAMES LEAVES BLATT.	B	C	D1	D2	PH FL FA SP	PAK EP TH PAK	DETAIL	MOD	OPMERKINGEN REMARQUES REMARKS BEMERKUNGEN
F046T214ZA75	65	3	640	640	S24	S24	80	63	2/18+1/21	F01B	glijdop/pastille



Kit: FK046T214ZB

Composition:

Partsnumber:

Number:

C330021	8
F046T214ZB02	2
C33312175	2
C301831	2
C223559	2
B046M12A010	2
B046M12A007	2