

WEWELER® U-BOLTS

To the naked eye, most U-bolts look more or less the same. It is only when you study the materials from which they are made and the production process used in their manufacture, that the difference becomes apparent.

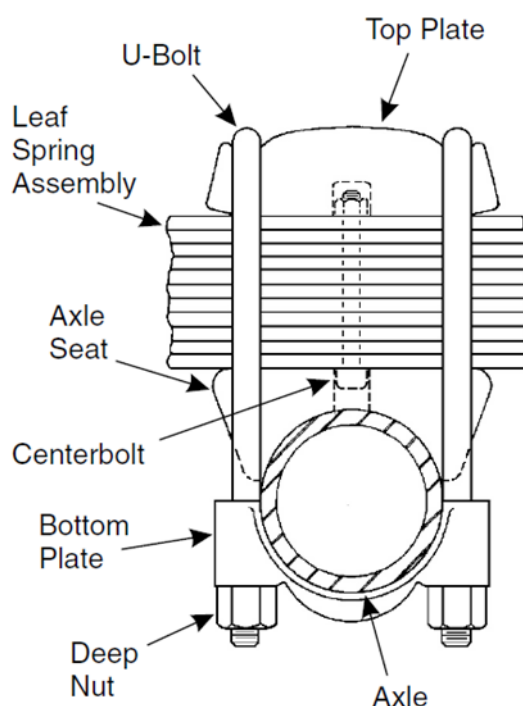
WEWELER® U-BOLTS are:

- Heat-treated: class 10,9
- Have precision rolled threads
- Have accurate forming to match mating components
- Easy to recognise:

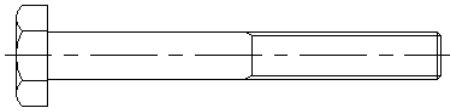


WEWELER® U-BOLTS serve in 4 critical and related roles:

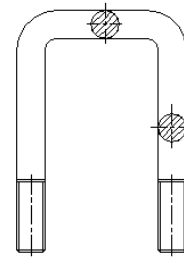
- The U-bolt provides the force required to clamp the spring firmly together.
- Properly installed quality U-bolts eliminates any flexing of the spring in the area between the U-bolts. This is critical since the hole for the centerbolt acts as a stress concentration which can lead to breakage of the spring.
- By firmly clamping the spring to the axle seat the horizontal forces acting on the centerbolt are reduced.
- Proper clamping of the spring by the U-bolts provides the desired spring stiffness and contributes to maintaining the vehicle ride height and handling characteristics.



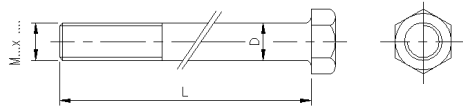
BB



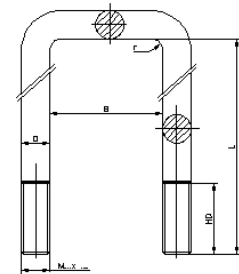
BC



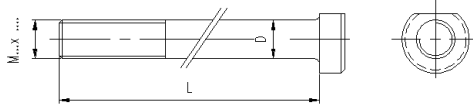
B00.01



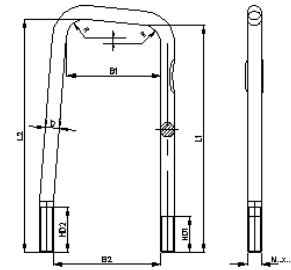
B01



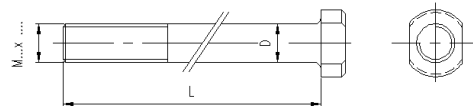
B00.02



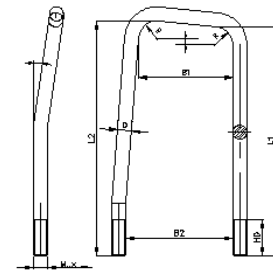
B0101



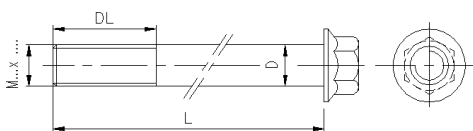
B00.03



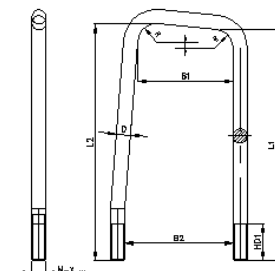
B0102



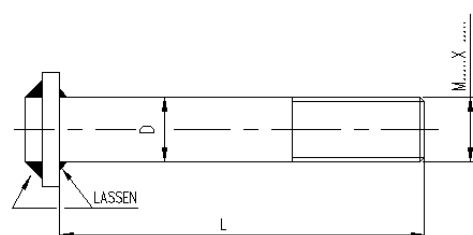
B00.04



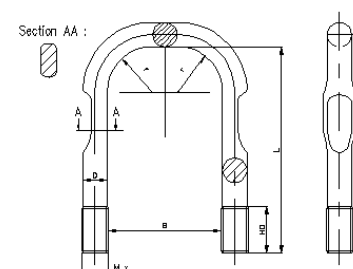
B0103



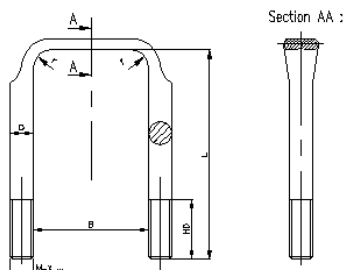
B00.41



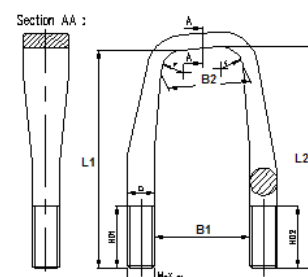
B0104



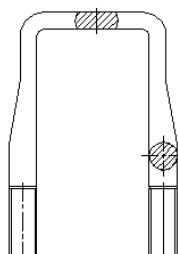
B0105



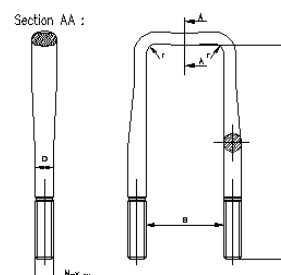
B0303



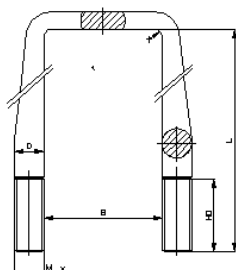
BCF



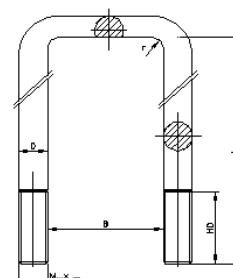
B03S



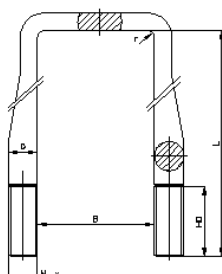
B02



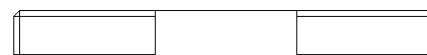
B04



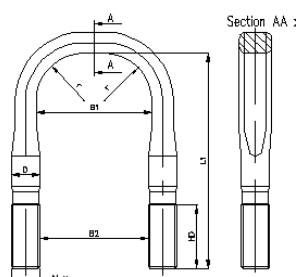
B03



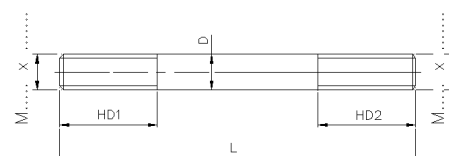
BD



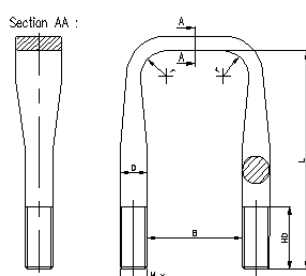
B0301



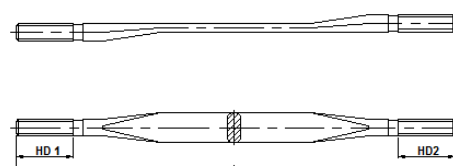
B50



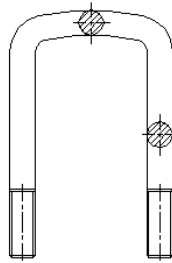
B0302



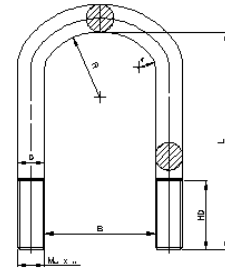
B52



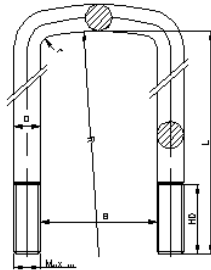
BO



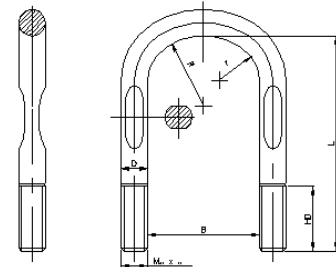
B10



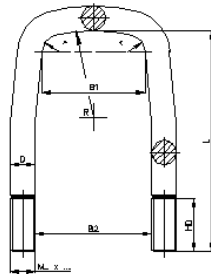
B05



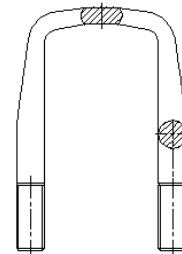
B1001



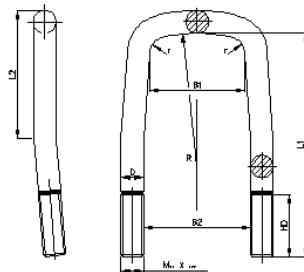
B0501



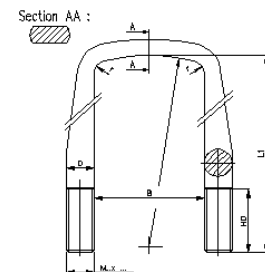
BOF



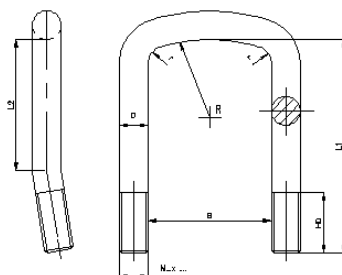
B0502



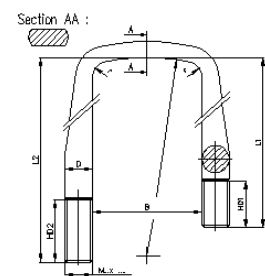
B07



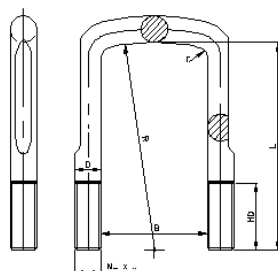
B0503



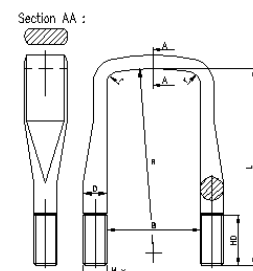
B0701



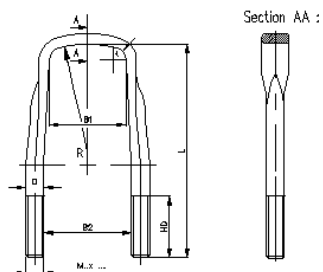
B0901



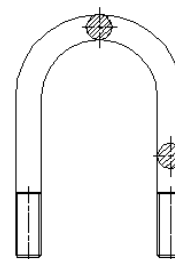
B08



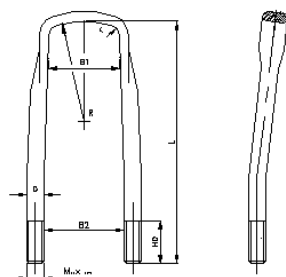
B0801



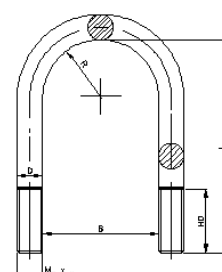
BR



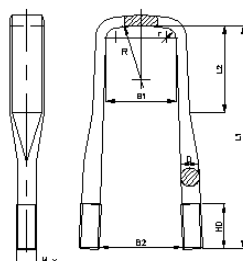
B0802



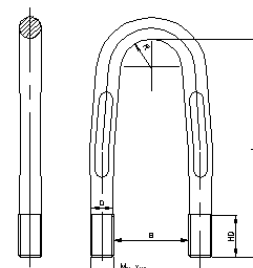
B16



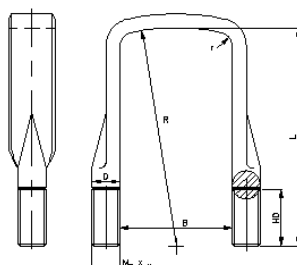
B0803



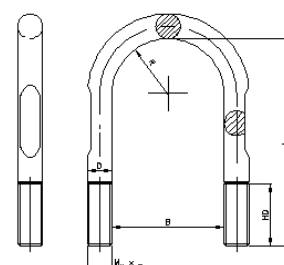
B1602



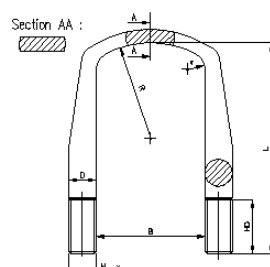
B09



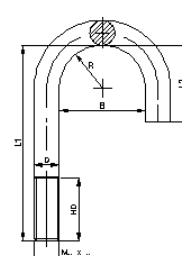
B16S



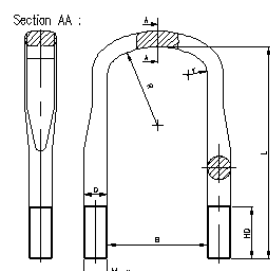
B11



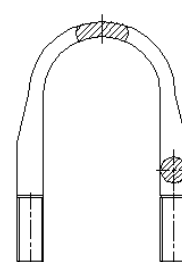
B51



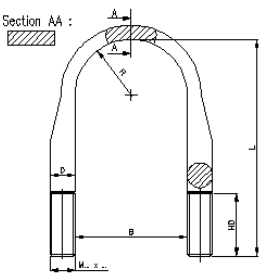
B14



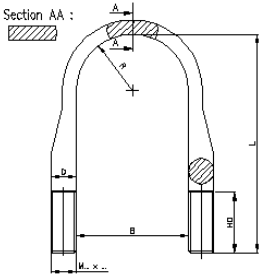
BRF



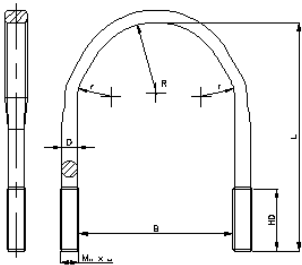
B17



B18



B1801



B1802

